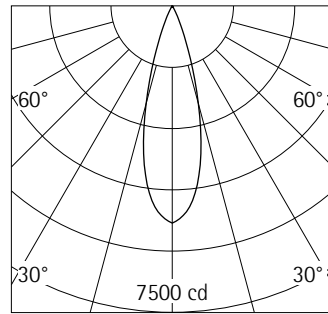


71616.000 White (RAL9002)
 LED 12W 1650lm 4000K neutral white
 Dimmable
 Version 3
 Spherolit lens, flood

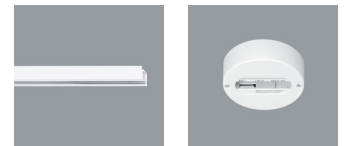
Product description
 Housing and bracket: cast aluminium, powder-coated. 0°-90° tilt. Bracket on 3-circuit adapter rotatable through 360°. Internal wiring. ERCO control gear, dimmable. Potentiometer for brightness control. ERCO 3-circuit adapter: polymer, white. LED module: high-power LEDs on metal-core PCB. Collimating lens made of optical polymer. Dimming with external dimmers possible (trailing edge). Weight 0.72kg



h(m)	E(lx)	D(m)
		29°
1	5315	0.52
2	1329	1.03
3	591	1.55
4	332	2.07
5	213	2.59

Technical data

Luminous flux of the luminaire	1396lm
Connected load	15W
Luminaire efficacy	93lm/W
Colour deviation	2 SDCM
Colour rendition index	CRI ≥80
Lumen maintenance (LM-80/TM-21)	L90/B10 ≤50000h
Lumen maintenance (LED manufacturer specifications)	L90 ≤100000h
LED failure rate	0.1% ≤50000h
Dimming range	1%-100%
Dimming method	CCR_PWM
LMF	E
Energy efficiency class	EEL A++
Standby power per control gear	--
Luminaires per circuit breaker B16	203



Mounting
 ERCO 3-circuit track
 Hi-trac 3-circuit track
 1-circuit singlet

For your regional contact in the ERCO
 Sales network click here
www.erco.com/contact

Technical Region: 220V-240V/50Hz
 We reserve the right to make technical
 and design changes.
 Edition: 27.10.2017
 Current version under
www.erco.com/71616.000

Planning data

Cleaning (a)	1				2				3			
	P	C	N	D	P	C	N	D	P	C	N	D
LMF	0.96	0.94	0.90	0.86	0.93	0.91	0.86	0.81	0.92	0.90	0.84	0.79
RSMF	0.99	0.97	0.95	0.92	0.98	0.97	0.95	0.92	0.98	0.97	0.95	0.92

Hours of operation (h)	1000	5000	10000	20000	30000	40000	50000
LLMF	1.00	0.99	0.98	0.96	0.94	0.92	0.90
LSF	1	1	1	1	1	1	1

- MF LMFxRSMFxLLMFxLSF
- MF Maintenance Factor
- LMF Luminaire Maintenance Factor
- RSMF Room Surface Maintenance Factor
- LLMF Lamp Lumens Maintenance Factor
- LSF Lamp Survival Factor
- P Room pure
- C Room clean
- N Room normal
- D Room dirty

Technical data in accordance with international norms and standards

- IEC 60598 Luminaires – Part 1+2: general requirements, specific requirements and tests
- IEC 62031 LED modules for general lighting – safety requirements
- IEC 62471 Photobiological safety of lamps and lamp systems
- EN 13032-4 Light and lighting – measurement and representation of photometric data
- CIE 13 Method of measuring and specifying colour rendering properties of light sources

All technical data is subject to industrially standard tolerances.
 Also see www.erco.com/erco-led

Accessories



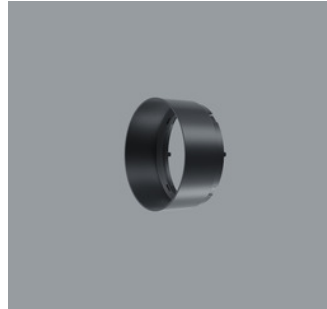
70857.000
Spherolit lens spot
made of optical polymer.
Replacement without tools.



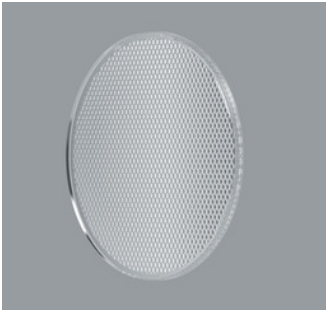
70708.000
Snoot
Polymer.
White



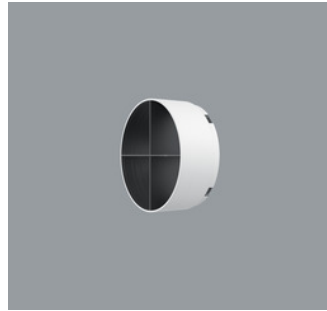
70858.000
Spherolit lens flood
made of optical polymer.
Replacement without tools.



70633.000
Snoot
Polymer.
Black



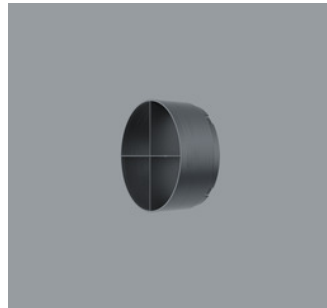
70859.000
Spherolit lens wide flood
made of optical polymer.
Replacement without tools.



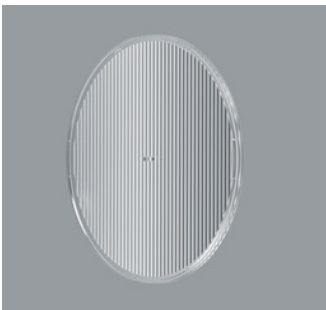
78036.000
Cross-baffle
Aluminium, coated black, plastic outer.
White



73997.000
Spherolit lens extra wide flood
made of optical polymer.
Replacement without tools.



78040.000
Cross-baffle
Aluminium, coated black, plastic outer.
Black



70860.000
Spherolit lens oval flood
made of optical polymer.
Replacement without tools.



78032.000
Honeycomb anti-glare screen
Black



70861.000
Spherolit lens wallwash
made of optical polymer.
Replacement without tools.

